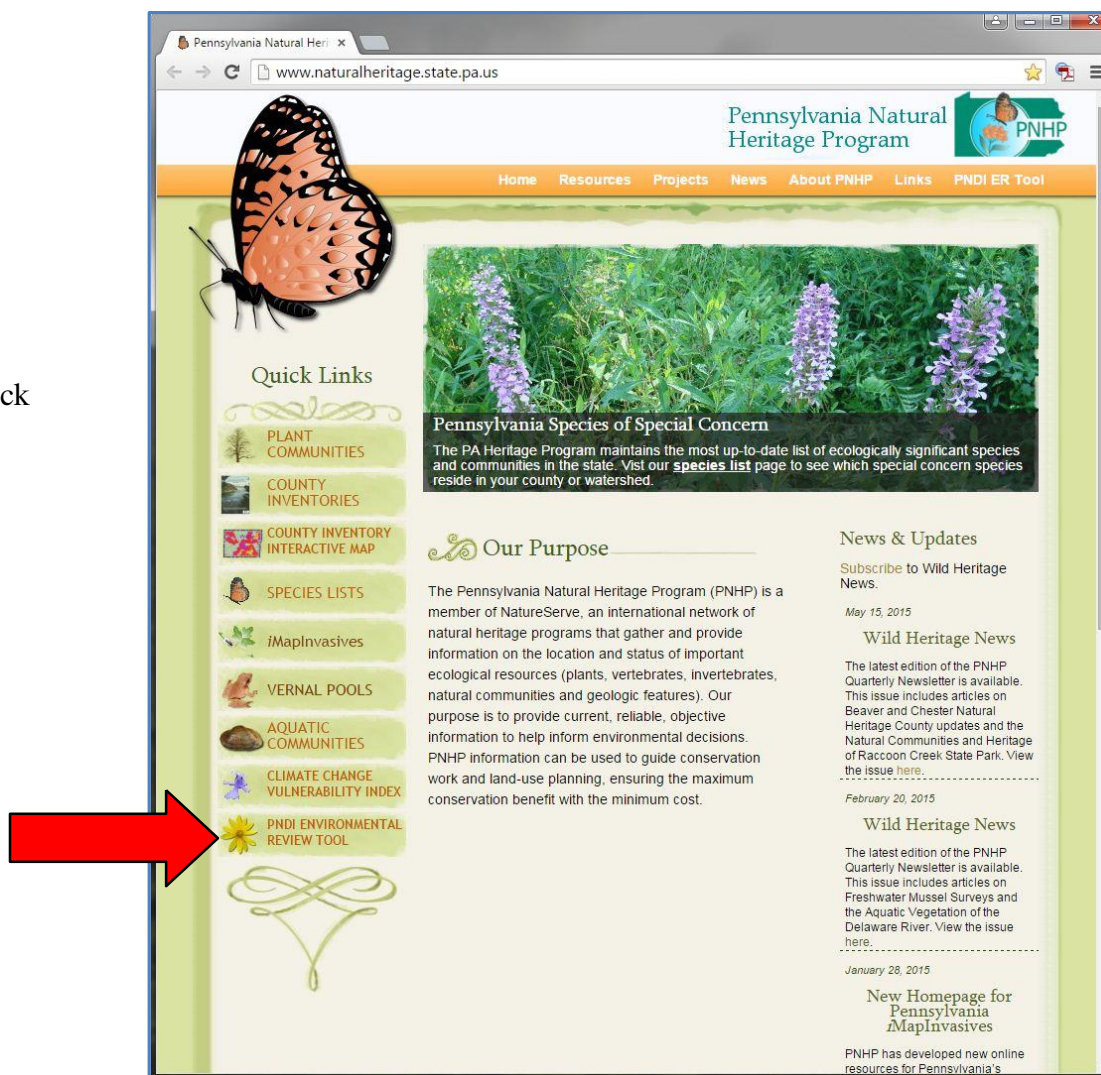


PNDI Environmental Review Process

Open the PA Natural Heritage Program website at <http://www.naturalheritage.state.pa.us>

To access the PNDI Environmental Review tool, click the “*Conservation Explorer - PNDI Environmental Review*” link on the bottom left corner of the page.



PNDI Environmental Review Process

Home | PNDI Environment

Pennsylvania Natural Heritage Program

Home Map Terms & Conditions Contact Us Help

Pennsylvania Conservation Explorer

Conservation Planning and PNDI Environmental Review

Welcome to Pennsylvania Conservation Explorer--for conservation planning and PNDI environmental reviews. The web-mapping tool allows anyone to perform online searches for potential impacts to threatened, endangered, special concern species and natural heritage resources.

For conservation planning, users do not need to register or log in. Anyone can view and create maps of natural heritage areas by clicking the [Map](#) tab. You will need to create an account to view environmental review polygons and generate a PNDI receipt for pre-permitting. You must be a registered user to view known locations of threatened, endangered, and special concern species and/or submit a project site for

User login

E-mail *

Password *

- [Create new account](#)
- [Request new password](#)

Log in

Step 1. From the Home Page, login with your E-mail address and Password and proceed to Step 3. If you have not previously used the site, select “Create new account” and proceed to Step 2. If you have a Login, but have forgotten your Password, proceed to Step 2b.

User account | PNDI Environment

Pennsylvania Natural Heritage Program

Home Map Terms & Conditions Contact Us Help

User account

Create new account Log in Request new password

E-mail *

A valid e-mail address. All e-mails from the system will be sent to this address. The e-mail address is not made public and will only be used if you wish to receive a new password or wish to receive certain news or notifications by e-mail.

Salutation

First name *

Last name *

Organization *

Step 2. Enter all of the requested information to create a new user account.

PNDI Environmental Review Process

Terms and Conditions of Use

Upon signing into the PNDI environmental review website, and as a condition of using it, you agree to certain terms of use. These are as follows:

- The web site is intended solely for the purpose of screening projects for potential impacts on resources of special concern in accordance with the instructions provided on the web site. Use of the web site for any other purpose or in any other way is prohibited and subject to criminal prosecution under federal and state law, including but not limited to the following: Computer Fraud and Abuse Act of 1986, as amended, 18 U.S.C. § 1030; Pennsylvania Crimes Code, § 4911 (tampering with public records or information), § 7611 (unlawful use of computer and other computer crimes), § 7612 (disruption of service), § 7613 (computer theft), § 7614 (unlawful duplication), and § 7615 (computer trespass).
- The PNHP reserves the right at any time and without notice to modify or suspend the web site and to terminate or restrict access to it.
- The terms of use may be revised from time to time. By continuing to use the web site after changes to the terms have been posted, the user has agreed to accept such changes.

This review is based on the project information that was entered. The jurisdictional agencies and DEP require that the review be redone if the project area, location, or the type of project changes. If additional information on species of special concern becomes available, this review may be reconsidered by the jurisdictional agency.

PRIVACY and SECURITY


This web site operates on a Commonwealth of Pennsylvania computer system. It maintains a record of each environmental review search result as well as contact information for the project applicant. These records are maintained for internal tracking purposes. Information collected in this application will be made available only to the jurisdictional agencies and to the Department of Environmental Protection, except if required for law enforcement purposes—see paragraph below. This system is monitored to ensure proper operation, to verify the functioning of applicable security features, and for other like purposes. Anyone using this system consents to such monitoring and is advised that if such monitoring reveals evidence of possible criminal activity, system personnel may provide the evidence to law enforcement officials. See Terms of Use.

☐ **Accept** Terms & Conditions of Use *

Create new account

User account | PNDI Environ x

← → ↻

 **Pennsylvania Natural Heritage Program**

Home Map Terms & Conditions Contact Us Help

User account

Create new account Log in Request new password

E-mail *

Enter your e-mail address.

Password *

Enter the password that accompanies your e-mail.

Log in

PNDI Environmental Review Tool - Development Version 0.22

Step 2b. Enter all of the requested information to log in or request a new password.

PNDI Environmental Review Process

My Projects

Project ID Contains
Project Title Contains
Project Created Between (CCYY-MM-DD)
Edit Status
- Any -
Apply
And

Project ID	Title	Project Description	Project Created	Project Size	Edit Status	Agency Status
PNDI-150	Standing Stone Pipeline	Large Project Test	2015-04-20 09:57 AM	Standard	Final	DCNR : Received edit DEP : Saved edit PFBC : Saved edit PGC : Saved edit
PNDI-144	Portland Landfill - test	Solid Waste Landfill	2015-04-14 02:49 PM	Standard	Scoped	DCNR : Received edit PFBC : Saved edit
PNDI-100	Shade Mountain Mine	Strip mining and refuse disposal.	2015-03-30 02:07 PM	Standard	Scoped	
PNDI-67	Bald Eagle SP	Remove and/or destroy old drainage tiles.	2015-03-13 02:32 PM		Final	DCNR : Concluded edit DEP : Saved edit PGC : Saved edit USFWS : Saved edit
PNDI-30	Fort Indiantown Gap	Glyphosate applications in various locations	2015-01-14 11:51 AM		Final	DCNR : Received edit DEP : Saved edit PFBC : Avoidance Measure edit USFWS : Avoidance Measure edit

Note: Clicking on the project Title, then clicking on the Receipt File opens the Receipt that was generated for that project.

Step 3. After logging in, click on “My Projects” for a list of previously created projects. If you have not previously created any projects, this table will be blank. To begin submitting a project, select the “Map” tab and click on the “Create Project” button. Note: You can return to this list at any time by clicking the “My Projects” tab.

PNDI Environmental Review Process

Select Project Type

Project Type *

Select only one Project Type per project

- ☒ Agriculture/Farming
- ☒ Aquaculture
- ☒ Communication
- ☒ Development
 - ☐ Additions/maintenance to existing development facilities
 - ☒ New commercial/industrial development (store, gas station, factory)
 - ☐ New public/community development (school, library, church, museum)
 - ☐ Other
- ☒ Residential
- ☒ Energy Storage, Production, and Transfer
- ☐ Forest Stewardship Plan
- ☒ Habitat Conservation and Restoration

Cancel Next

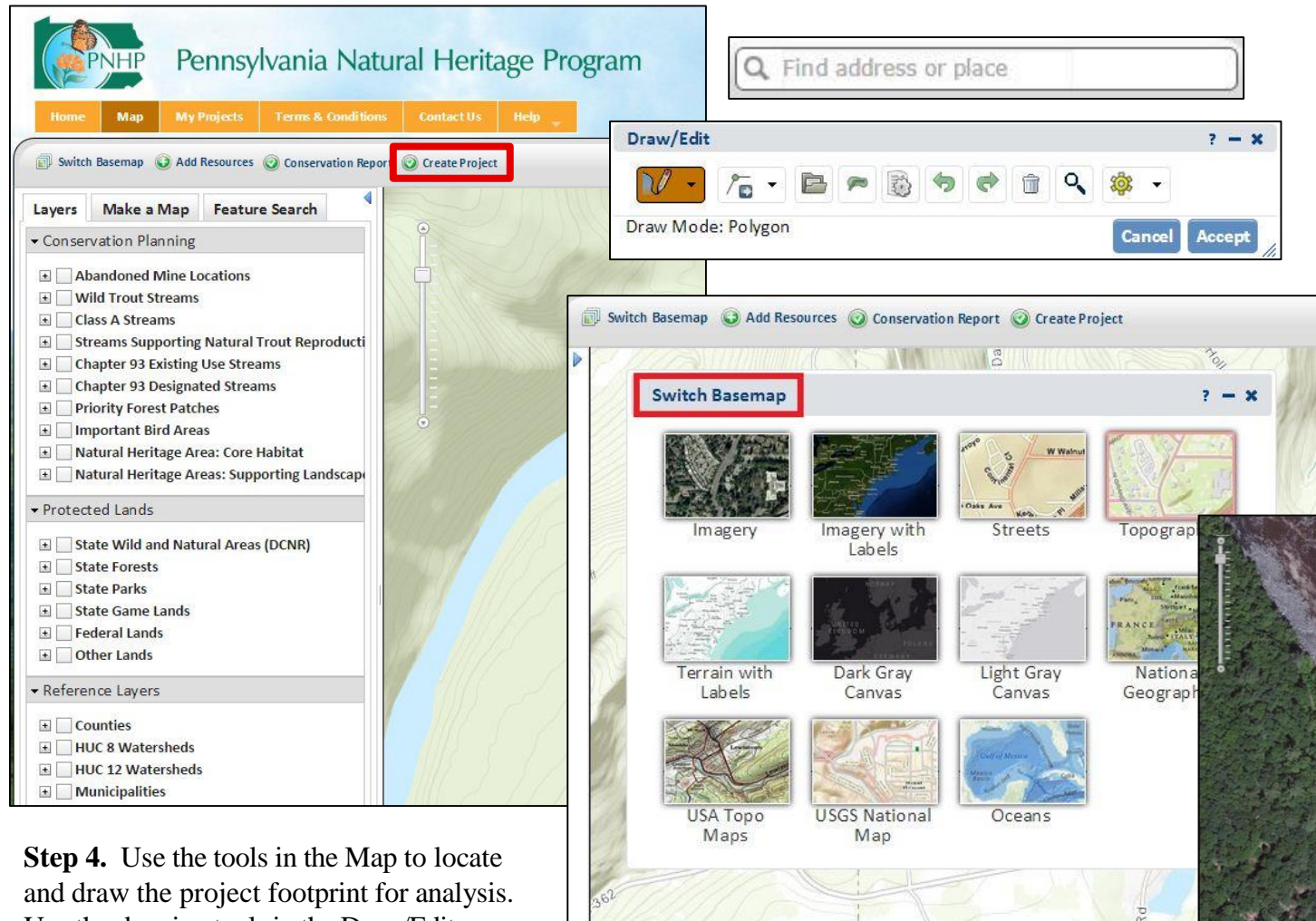
Step 3a. Select a project type and click “Next.”

Project Types

- Aquaculture
 - Existing hatchery
 - facility maintenance or expansion : **Buffer = 200 Feet**
 - increase surface or groundwater withdrawal : **Buffer = 200 Feet**
 - modify effluent discharge (quality or quantity) : **Buffer = 200 Feet**
 - pond or raceway construction : **Buffer = 200 Feet**
 - Proposed hatchery : **Buffer = 200 Feet**
- Agriculture/Farming
 - Application of biosolids : **Buffer = 200 Feet**
 - Construction/development of a new agricultural operation (orchard, farm) : **Buffer = 200 Feet**
 - Continued agricultural field use (crops, fruit, trees, grazing) : **Buffer = 200 Feet**
 - Conversion of wooded area, or fallow field into agricultural production : **Buffer = 200 Feet**
 - Expansion, modification, maintenance of an existing agricultural operation : **Buffer = 200 Feet**
 - Installation of livestock crossing : **Buffer = 200 Feet**
 - Pond construction : **Buffer = 200 Feet**
 - Stream or groundwater withdrawal (for irrigation, livestock watering) : **Buffer = 200 Feet**
 - Streambank fencing : **Buffer = 200 Feet**
 - Other : **Buffer = 200 Feet**
- Communication
 - Antenna and/or communication dish installation
 - on new structure (cell tower) : **Buffer = 200 Feet**

Step 3b. For a list of all project types and their corresponding screening area sizes (buffers), hover the mouse over the Help tab and click on “Project Types.”

PNDI Environmental Review



PNHP Pennsylvania Natural Heritage Program

Home Map My Projects Terms & Conditions Contact Us Help

Switch Basemap Add Resources Conservation Report Create Project

Layers Make a Map Feature Search

Conservation Planning

- ☐ Abandoned Mine Locations
- ☐ Wild Trout Streams
- ☐ Class A Streams
- ☐ Streams Supporting Natural Trout Reproduction
- ☐ Chapter 93 Existing Use Streams
- ☐ Chapter 93 Designated Streams
- ☐ Priority Forest Patches
- ☐ Important Bird Areas
- ☐ Natural Heritage Area: Core Habitat
- ☐ Natural Heritage Areas: Supporting Landscape

Protected Lands

- ☐ State Wild and Natural Areas (DCNR)
- ☐ State Forests
- ☐ State Parks
- ☐ State Game Lands
- ☐ Federal Lands
- ☐ Other Lands

Reference Layers

- ☐ Counties
- ☐ HUC 8 Watersheds
- ☐ HUC 12 Watersheds
- ☐ Municipalities

Draw/Edit

Draw Mode: Polygon

Cancel Accept

Switch Basemap

Imagery Imagery with Labels Streets Topographic

Terrain with Labels Dark Gray Canvas Light Gray Canvas National Geographic

USA Topo Maps USGS National Map Oceans

Use the “Find address or place” tool if searching by address, zip code, or municipality.

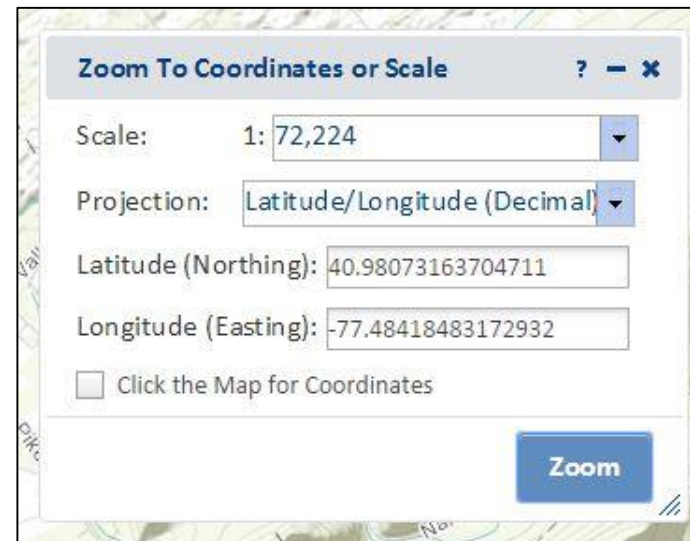
Step 4. Use the tools in the Map to locate and draw the project footprint for analysis. Use the drawing tools in the Draw/Edit toolbar to draw the project and preview the screening area.

Note: you can change the background map by clicking on “Switch Basemap.”



PNDI Environmental Review Process

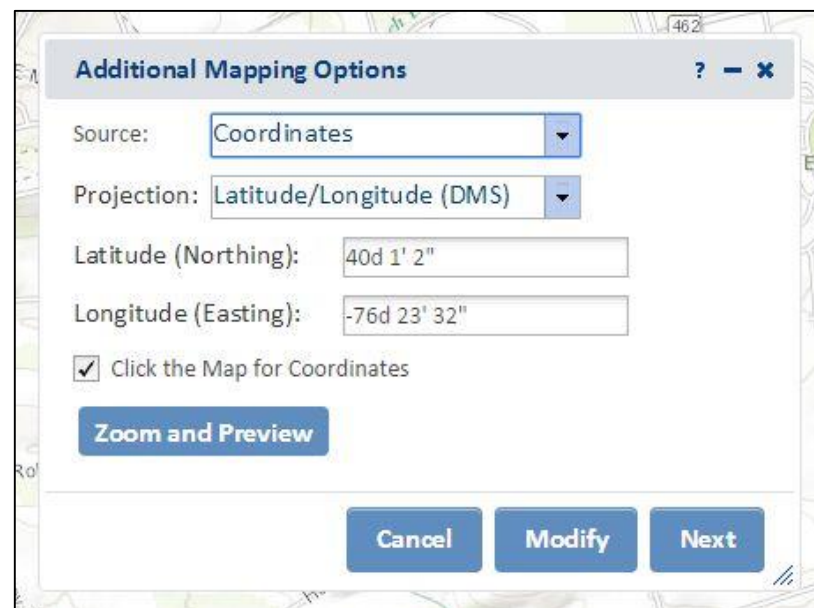
Step 4a. If you are locating your project with latitude/longitude coordinates, use the Zoom to Coordinates or Scale tool. Select decimal degree or degree minutes seconds. You can select the scale to zoom in/out to the desired scale.



The dialog box is titled "Zoom To Coordinates or Scale" and features a close button (X) in the top right corner. It contains the following fields and options:

- Scale:** A dropdown menu showing "1: 72,224".
- Projection:** A dropdown menu showing "Latitude/Longitude (Decimal)".
- Latitude (Northing):** A text input field containing "40.98073163704711".
- Longitude (Easting):** A text input field containing "-77.48418483172932".
- ☐ Click the Map for Coordinates
- Zoom** button

Step 4b. To automatically create a point project with a set of known latitude/longitude coordinates, click on the Draw Shape button and select Point mode. Click on Additional Mapping Options, and select "Coordinates" from the Source dropdown. Enter the coordinates and click "Next."



The dialog box is titled "Additional Mapping Options" and features a close button (X) in the top right corner. It contains the following fields and options:

- Source:** A dropdown menu showing "Coordinates".
- Projection:** A dropdown menu showing "Latitude/Longitude (DMS)".
- Latitude (Northing):** A text input field containing "40d 1' 2\"".
- Longitude (Easting):** A text input field containing "-76d 23' 32\"".
- ☒ Click the Map for Coordinates
- Zoom and Preview** button
- Cancel** button
- Modify** button
- Next** button

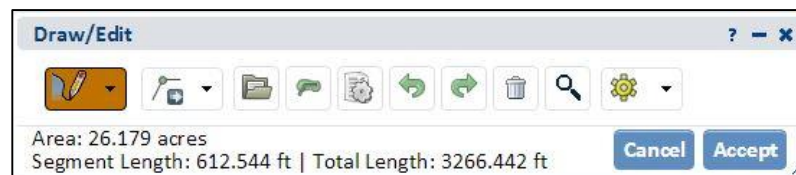
PNDI Environmental Review Process

Step 5. In addition to using the methods described in Step 4, you can double-click on the map, drag on the map, and/or use the zoom bar to find the area of interest. Hint: Hold down the Shift key and drag a box to zoom in to a more specific area of interest.

Select the appropriate Drawing Tool – polygon, line or point—to draw your project. A point project is drawn by selecting “Point” and single-clicking on the appropriate location. Note: Points are buffered 10 meters in radius.

Line and polygon projects are drawn by single-clicking on map locations (vertices) and double-clicking to finish. If you need to redraw the project, select “Cancel” to start over. When finished drawing the project, click on “Show Preview Buffer” to preview the screening area (see Step 5c).

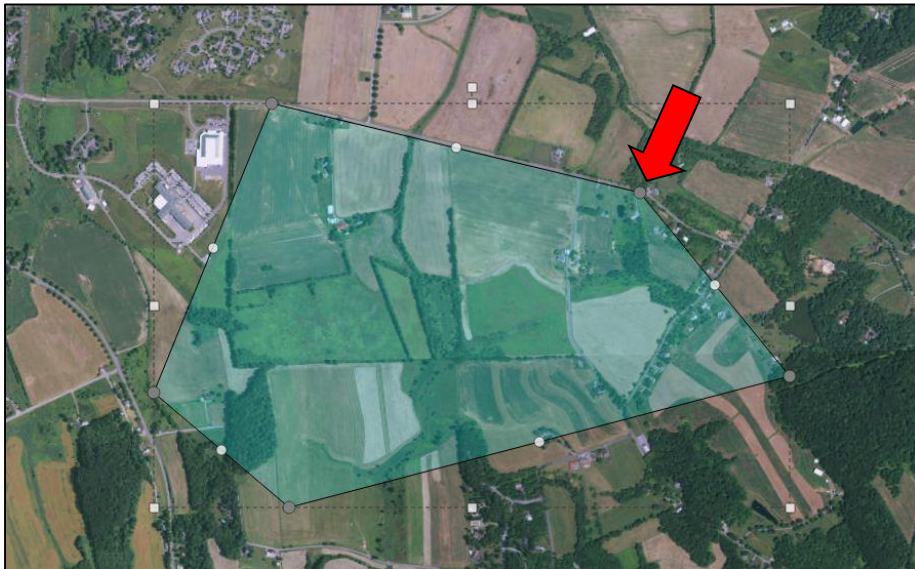
Note: The Draw/Edit Toolbar displays the project Area, Segment Length and Total Length.



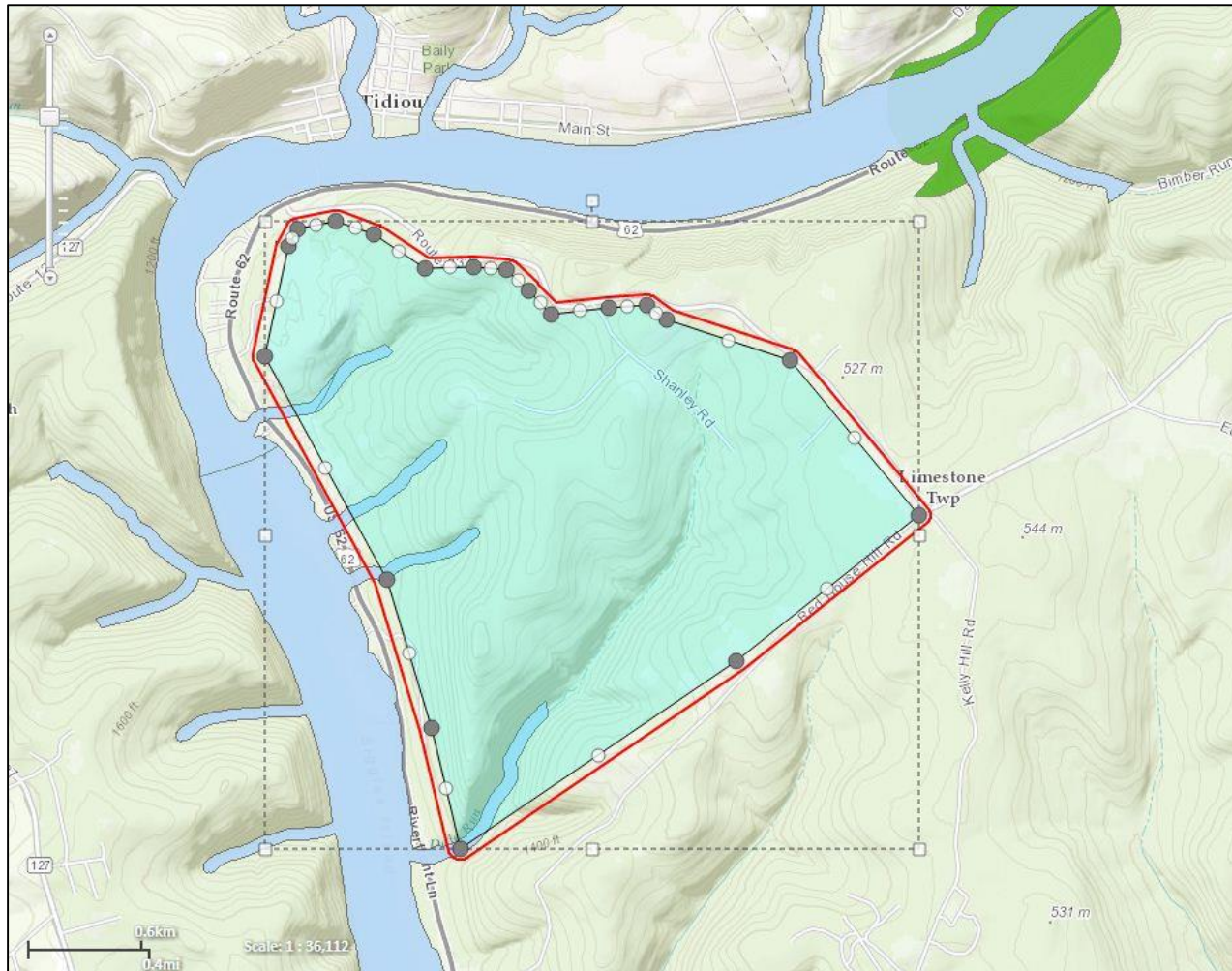
PNDI Environmental Review Process



Step 5a. You can edit the shape by clicking on the Edit Shape button in the Draw/Edit toolbar. Hover the cursor over the project. Round handles will appear at the ends and midpoints of each line segment. When finished editing, click “Accept.”

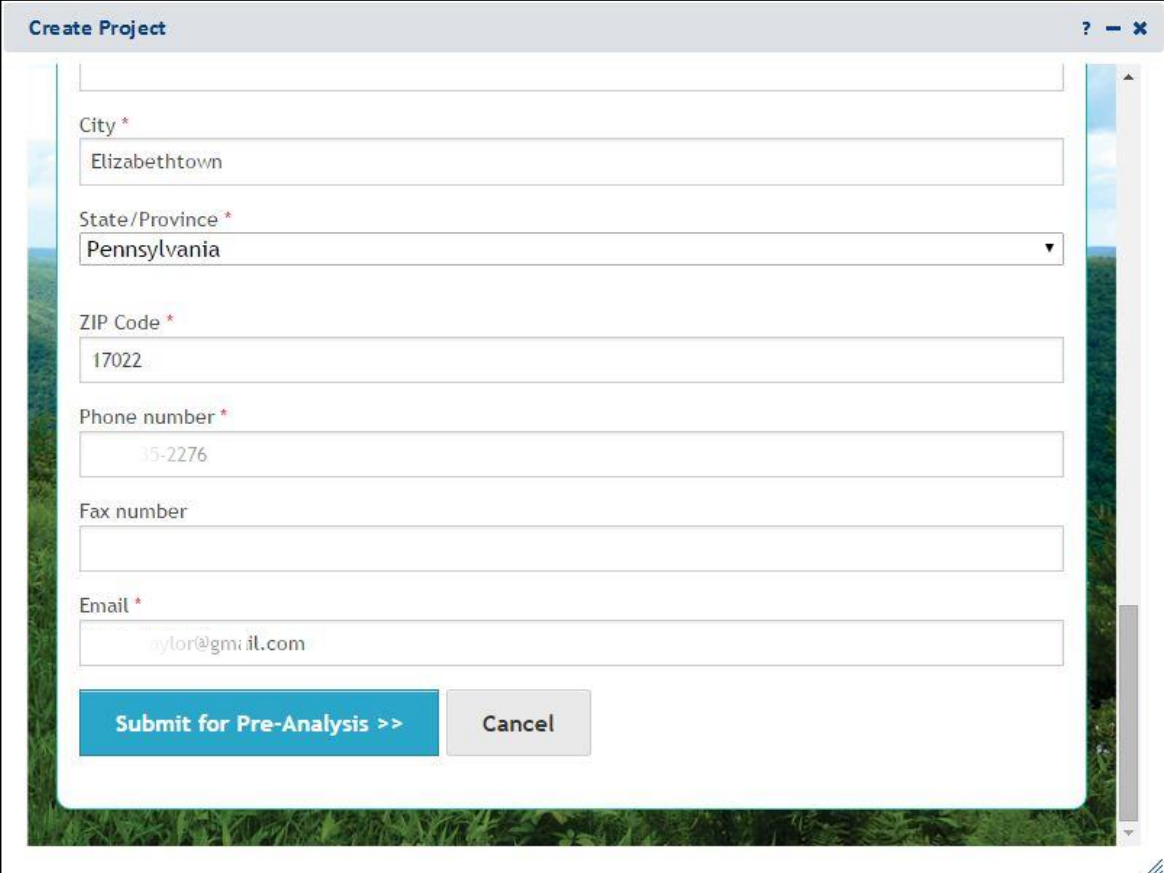


Step 5b. To move a handle, hold the left mouse button down and drag the handle.



Step 5c. Click on the “Show Preview Buffer” button in the Draw/Edit Toolbar to see the project footprint with the buffered screening area (outlined in red) and any overlapping environmental review polygons. Click “Accept.”

Step 6. Enter a Project Title and description. Verify that the project and contact information is correct, and press “Submit for Pre-Analysis”



The screenshot shows a web application window titled "Create Project". The window has a light gray header bar with the title "Create Project" on the left and window control icons (help, close, maximize) on the right. The main content area is white and contains several form fields. At the top is a large empty text box for a project title or description. Below it are fields for "City *" (containing "Elizabethtown"), "State/Province *" (a dropdown menu showing "Pennsylvania"), "ZIP Code *" (containing "17022"), "Phone number *" (containing "35-2276"), "Fax number" (empty), and "Email *" (containing "aylor@gmail.com"). At the bottom of the form are two buttons: a blue "Submit for Pre-Analysis >>" button and a gray "Cancel" button. The window has a vertical scrollbar on the right side.

Create Project

City *
Elizabethtown

State/Province *
Pennsylvania

ZIP Code *
17022

Phone number *
35-2276

Fax number

Email *
aylor@gmail.com

Submit for Pre-Analysis >> Cancel

Preliminary analysis of your project indicates more information is required. Please respond and then Submit to generate your receipt.

Question 1: *

Will the project require permanent alteration or removal of natural vegetation, soils, water (streams, ponds, vernal pools, etc.)?

☐ Yes
☐ No
☐ Unknown

Question 2: *

Which of the following closest describes the proposed project?

☐ No groundwater extraction (e.g., water supply well, well for irrigation, groundwater pumping to facilitate mining, pump-and-treat operation) is proposed in order to implement or support this project.
☐ The proposed project will be connected to, and entirely serviced by, an existing, off-site water delivery and supply line (e.g., operated by a municipality or water company).
☐ A well is proposed to support a single-family residence, AND the residence is NOT part of a larger proposed development or subdivision.
☐ A well or other groundwater extraction (e.g., groundwater pumping to facilitate mining, pump-and-treat operation) is proposed as part of this project, or in order to support some aspect of the project, but less than 1000 gallons per day will be extracted.
☐ A well or other groundwater extraction (e.g., groundwater pumping to facilitate mining, pump-and-treat operation) is proposed as part of this project, or in order to support some aspect of the project, and more than 1000 gallons per day will be extracted.

Question 3: *

Does the following statement apply to this project? The project area HAS been investigated by someone qualified to identify and delineate wetlands, and wetlands or streams were located, and some project activities will or might occur within 300 feet of a wetland or stream.

☐ Yes
☐ No
☐ Unknown

Question 4: *

Is tree removal, tree cutting or forest clearing necessary to implement all aspects of this project?

☐ No
☐ Yes

Confirm Payment — ✕

NOTE: Payment of \$40 by Visa, MasterCard or Discover is required to complete this function. Would you like to continue?

Step 7. After submitting a project for pre-analysis, you may be asked questions if additional information is required. Answer them and click “Submit.” You may be required to pay a fee for the first draft of the receipt. All subsequent revisions specific to the project are free of charge.

PNDI Environmental Review Process

Step 8. When the PNDI analysis is complete, an email message will be sent to you, prompting you to visit “My Projects” to view the receipt.

The receipt indicates if there are potential impacts, which agency(s) they are with, and it includes instructions on how to proceed.

The receipt is displayed by clicking on the Project Title and then the Receipt File pdf. Project summary information is displayed in the receipt followed by search results, location maps and agency-specific instructions. If the receipt is ready for agency review, click on the Edit Details/Finalize button. Upload any documents requested in the receipt (or click on the checkbox(s) if mailing documents or no further review is needed) using the Choose File button at the bottom of the page. Click on the Project Edit Status radio button indicating Final. Be sure to click Save when you are finished.

Note: Agency status information and downloadable zipped shapefiles are also accessible on the project page.

4. DEP INFORMATION

The Pa Department of Environmental Protection (DEP) requires that a signed copy of this receipt, along with required documentation from jurisdictional agencies concerning resolution of potential impacts, be submitted with applications for permits requiring PNDI review. For cases where a "Potential Impact" to threatened and endangered species has been identified before the application has been submitted to DEP, the application should not be submitted until the impact has been resolved. For cases where "Potential Impact" to special concern species resources has been identified before the application has been submitted, the application should be submitted to DEP along with the PNDI receipt. The PNDI Receipt should also be submitted to the appropriate agency according to directions on the PNDI Receipt. DEP and the jurisdictional agency will work together to resolve the potential impact(s). See the DEP PNDI policy at <http://www.naturalheritage.state.pa.us>.

Project Edit Status *

By selecting Final, I certify that this information provided accurately reflects the project activity.

☒ Draft

☐ Final

File attachments

Add a new file

Attach supporting documentation here. **Please note:** This is a two-step process; first Choose the File and then Upload it to attach to the project. Files added to the project are not permanent until you save or submit this page.

Choose File | No file chosen

Upload

Files must be less than 10 MB.

Allowed file types: doc jpeg jpeg gif png txt doc xls pdf ppt pps odt ods odp docx xlsx zip kml kmz.

☐ I will mail my project documentation to the agencies requesting coordination on the PNDI receipt.
Check this box if you will NOT be uploading project documentation to DCNR, PGC or PFBC for environmental review.

☐ No further review is required.
Check this box if the draft PNDI receipt indicates no impacts to threatened, endangered and/or species of special concern are present **and** (if applicable) you agree to comply with all avoidance measures listed on the receipt.

Contact Information

Save Cancel



Tool Review. To navigate content in *Conservation Explorer*, use the gold tabs near the top of the page. To carry out a specific task, use the buttons below the tabs. To display data in the map, click on/off the checkboxes in the Table of Contents. Note: You may need to zoom in closer to view some or all of the layers.

Use the buttons in the upper right corner of the map to quickly log in/out or change your account settings. Find additional tools, such as identify (get info), measure, zoom to scale, print, bookmark, zoom to previous/next extent, and find address or place.

