

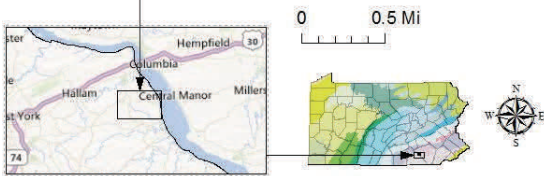
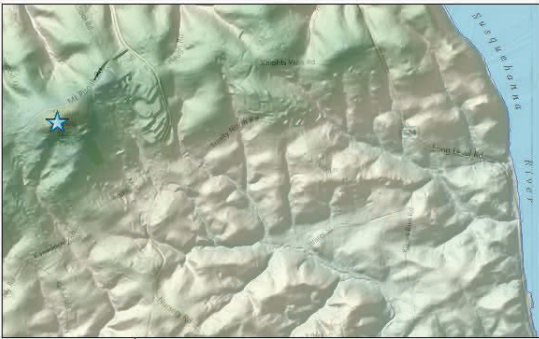


## MT. PISGAH YORK COUNTY



### Location

Samuel S. Lewis State Park, York Co., Lower Windsor Twp.,  
lat: 39.9956, lon: -76.5494; Red Lion 7.5-minute quadrangle



### Geology

At an elevation of 865 feet, Mt. Pisgah's summit stands at least 500 feet above the surrounding countryside providing a beautiful panorama of the lower Susquehanna Valley. On a clear day, a visitor to Mt. Pisgah can see as far as Governor Dick Hill, a 1,150-foot mountain of an intrusive igneous rock called diabase in Lebanon County, about 18 miles away. The surrounding landscape is developed on complexly folded and faulted metamorphosed rocks that range in age from Precambrian to Ordovician (600 to 450 mya). These metamorphic rocks were originally sedimentary sandstones, conglomerates, limestones, dolomites, and shales that formed in near shore and shallow marine environments. The high pressures and temperatures of a mountain-building event (450 mya) along with deep burial caused recrystallization of the rocks into slates, phyllites, and schists. Periods of folding and faulting along with erosion and intermittent uplift occurred for hundreds of millions of years to form the present landscape. Mt. Pisgah is underlain by the Chickies Formation, which is a resistant rock unit composed mostly of quartzite.



View of the Susquehanna River to the east from Mt. Pisgah at Samuel S. Lewis State Park. Photo courtesy of State Parks.

### Recommended Reading

Inners, J. D., 1983, Samuel S. Lewis State Park, York County—Mt. Pisgah and the lower Susquehanna Valley Survey, 4th ser., [Park Guide 17](#).

For information regarding outstanding geologic features, contact the Pennsylvania Geological Survey:

Bureau of Topographic and Geologic Survey, 3240 Schoolhouse Rd., Middletown, PA 17057

717-702-2017 [www.dcnr.state.pa.us/topogeo](http://www.dcnr.state.pa.us/topogeo)

Visit the [Gifford Pinchot State Park](#) web page of DCNR.